

Crossing Borders



interpret europe

SIMID

Spring Event in Prague, 19-21 May 2017

#ieprague17

Do you work in historic buildings, landscapes, parks, museums or other heritage venues? Do you communicate natural or cultural heritage as part of an organisation, as a company or in the university context?

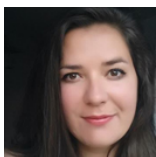
From 19-21 May 2017 we will meet for our [Spring Event 'Crossing Borders'](#) in Prague to discuss how we can work more closely together, and how we can improve our skills to give heritage all across Europe a deeper meaning.



Three keynote speakers will be happy to welcome you:



Lenka Mrázová from the UNESCO Chair of Museology and World Heritage will trigger thinking on the role of interpretation at the border of political heritage declarations and reality.



Jelena Močević, Council of Europe, will show examples how the European Heritage Days help to cross borders and will reflect what role this might play regarding heritage and identity.



Steven Timoney, University of the Highlands and Islands, will speak about the only MSc programme on interpretation in Europe and about crossing the borderline between academia and practice.

Parallel sessions

Participants from all over Europe will offer workshops and presentations. To select what is most interesting for you, you will always be able to choose from three parallel sessions. If you would like to contribute: our [Call for Papers](#) remains open until 28 February.

Market of Ideas

You are invited to present posters and to use the speakers' corner during our Market of Ideas. This offers another opportunity for exchange and especially to look for partners and to discuss future projects.

Study visits

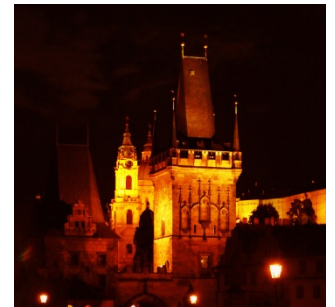
You will experience interpretation at the Historic Centre of Prague World Heritage Site. There will be time for a shared dinner and for a spring evening strolling through the cobblestone lanes, cathedrals and towers of Prague.

Contact

The Spring Event will be organised by SIMID, the Czech Association for Heritage Interpretation. Your contact is springevent2017@interpret-europe.net.

Join

[Register now](#) for our Spring Event from 19-21 May 2017 in Prague.
We are looking forward to seeing you there!



Interpret Europe
European Association for Heritage Interpretation
Am Rasen 23
37214 Witzenhausen
Germany

mail@interpret-europe.net
www.interpret-europe.net
+49-5542-505873



Serving all who use first-hand experiences
to give natural and cultural heritage
a deeper meaning